

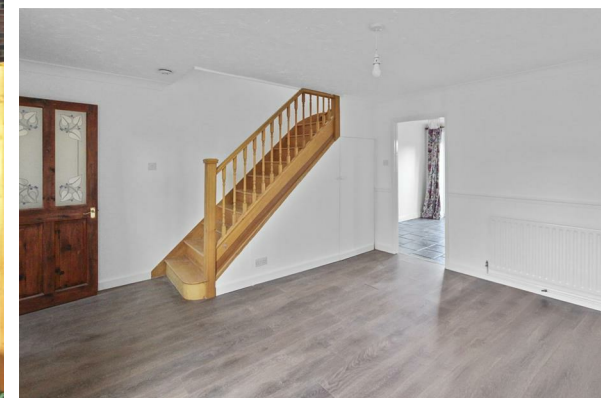


BYWATER HERRING
SALES & LETTINGS
A TRADITION OF TRUST



TO LET

Joan Pyel Close Irthlingborough
£1,300 Per Calendar Month



- Newly decorated throughout
- Long term let!
- Two double bedrooms plus a versatile third – perfect for hobbies, work or guests
- Driveway parking
- Just a few steps from the Irthlingborough Lakes & Meadows walking trails
- Available early December
- Spacious lounge leading to a separate dining room with French doors to the garden
- Family bathroom with a clean, classic finish
- Enclosed back garden with space for potting, planting or simply putting your feet up
- A 25 minute to the local shops, and just minutes by car or bus to Rushden Lakes and Wellingborough

This Quiet Cul-De-Sac Semi Is A Rare Chance To Rent Somewhere Peaceful, Practical And Close To Nature. With the Lakes & Meadows just moments away, this newly decorated three bedroom home is ideal for renters who love calm surroundings, weekend walks and a more relaxed pace after work.

THE PROPERTY

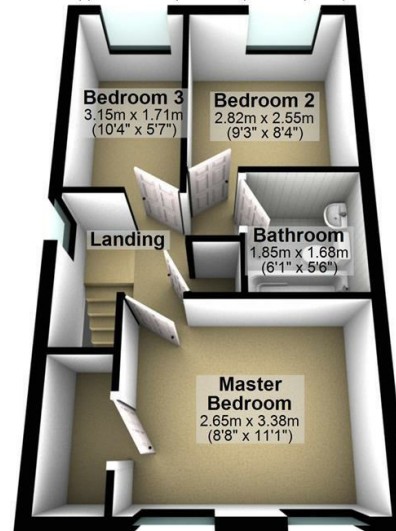
Ground Floor

Approx. 34.6 sq. metres (372.0 sq. feet)



First Floor

Approx. 32.8 sq. metres (353.4 sq. feet)



Total area: approx. 67.4 sq. metres (725.4 sq. feet)

